



APPROVAL:

DIRECTOR OF THE DEPARTMENT OF ENGINEERING

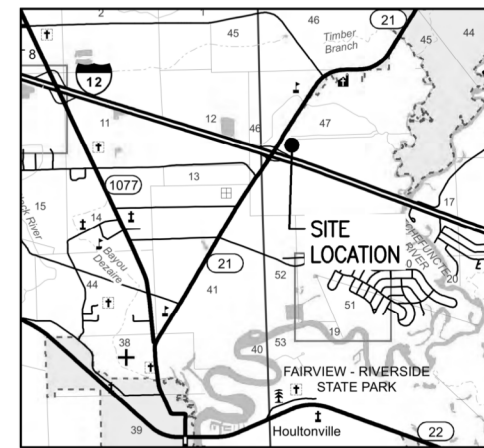
SECRETARY OF THE PARISH PLANNING COMMISSION

CLERK OF COURT

DATE FILED

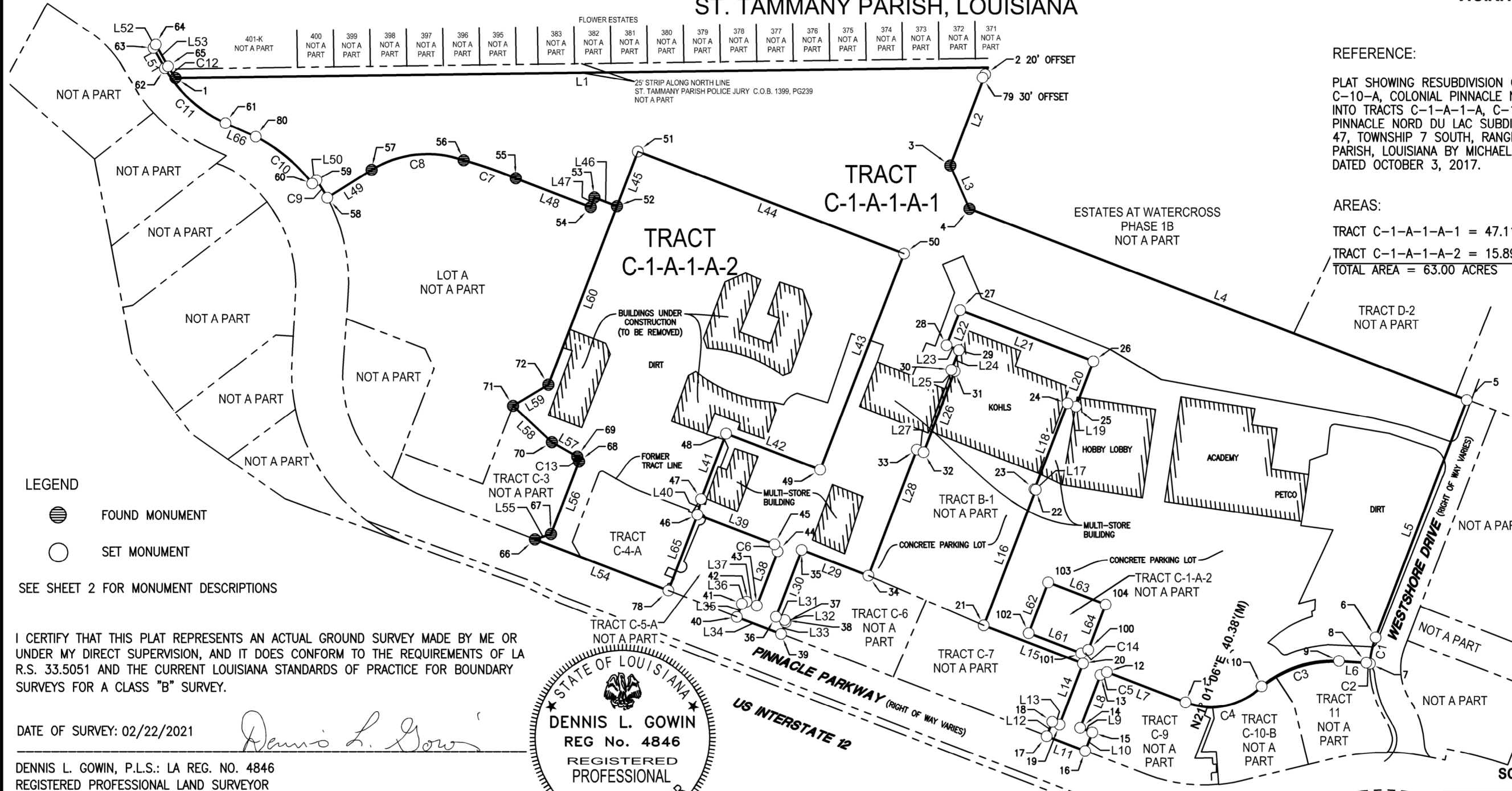
FILE NO

**PLAT SHOWING RESUBDIVISION OF
TRACTS C-1-A-1-A AND C-4-A
INTO
TRACTS C-1-A-1-A-1 AND C-1-A-1-A-2
OF COLONIAL PINNACLE NORD DU LAC SUBDIVISION
SECTION 47, TOWNSHIP 7 SOUTH - RANGE 11 EAST,
GREENSBURG LAND DISTRICT
ST. TAMMANY PARISH, LOUISIANA**



VICINITY MAP

NOTES:
GRID NORTH, LOUISIANA STATE PLANE SOUTH ZONE (1702)
NAD 83 AS DERIVED FROM THE LSU C4G RTK NETWORK (2020.1).



REFERENCE:

PLAT SHOWING RESUBDIVISION OF TRACTS C-1-A-1 AND C-10-A, COLONIAL PINNACLE NORD DU LAC SUBDIVISION INTO TRACTS C-1-A-1-A, C-10-B AND C-11 COLONIAL PINNACLE NORD DU LAC SUBDIVISION LOCATED IN SECTION 47, TOWNSHIP 7 SOUTH, RANGE 11 EAST, ST. TAMMANY PARISH, LOUISIANA BY MICHAEL P. BLANCHARD, PLS. DATED OCTOBER 3, 2017.

AREAS:

TRACT C-1-A-1-A-1 = 47.11 ACRES
TRACT C-1-A-1-A-2 = 15.89 ACRES
TOTAL AREA = 63.00 ACRES

LEGEND

- FOUND MONUMENT
- SET MONUMENT

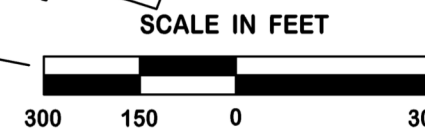
SEE SHEET 2 FOR MONUMENT DESCRIPTIONS

I CERTIFY THAT THIS PLAT REPRESENTS AN ACTUAL GROUND SURVEY MADE BY ME OR UNDER MY DIRECT SUPERVISION, AND IT DOES CONFORM TO THE REQUIREMENTS OF LA R.S. 33.5051 AND THE CURRENT LOUISIANA STANDARDS OF PRACTICE FOR BOUNDARY SURVEYS FOR A CLASS "B" SURVEY.

DATE OF SURVEY: 02/22/2021

Dennis L. Gowin

DENNIS L. GOWIN, P.L.S.: LA REG. NO. 4846
REGISTERED PROFESSIONAL LAND SURVEYOR
DGOWIN@DDGPC.COM



REVISION	BY

DDG
DUPLANTIS DESIGN GROUP

DUPLANTIS DESIGN GROUP, PC
SURVEY
16564 Brewster Road, Suite 101
Covington, LA 70433
Phone: 985.249.6180 || Fax: 985.249.6190
1308 Canella Street, Suite 200
Lafayette, LA 70508
WWW.DDGPC.COM

RESUBDIVISION
SECTION 47 T7S-R11E, ST. TAMMANY PARISH, LOUISIANA
FOR BROOKFIELD PROPERTIES

DRAWN	BPV
CHECKED	DLG
PROJECT NO.	20-380
FILE	20-380 RESUB
SHEET	1-2

ST-20-0007-01-380 Nord Du Lac Contour 01-380 RESUB.dwg